

sunsation™  
RETRACTABLE AWNINGS

buyersguide



SUN  
3000 • 5000 • 8000  
RETRACTABLE AWNING



Use all your living space with an awning-covered patio that shields you from the sun. Enjoy a life where you are the host of every get-together, party, and holiday. Your family and friends will love the shade and extended living your outdoor awning provides. And when the party's over and everyone goes home- you can keep on enjoying your awning, every day.

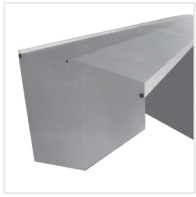
# QUALITY. COMFORT. CLASS.

All Sunsation™ Awnings are renowned for Quality, Comfort and Class. Quality is resting easy under your Sunsation awning and trusting us to deliver the best. Comfort means knowing you can protect your home from anywhere in the world. Class is enjoying an attractive awning made to last. With precision engineering, durable frame components, and premium fabric, our top-quality materials and incredible warranty make Sunsation™ Awnings superior in all the ways that count.

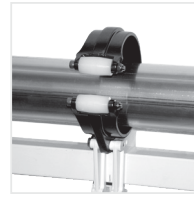


# AWNING

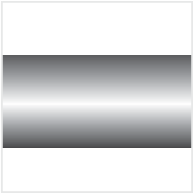
## COMPONENTS & FEATURES



Extend the life of your awning fabric and motor with a **hood cover** that protects against wind, rain, debris, mold and mildew.

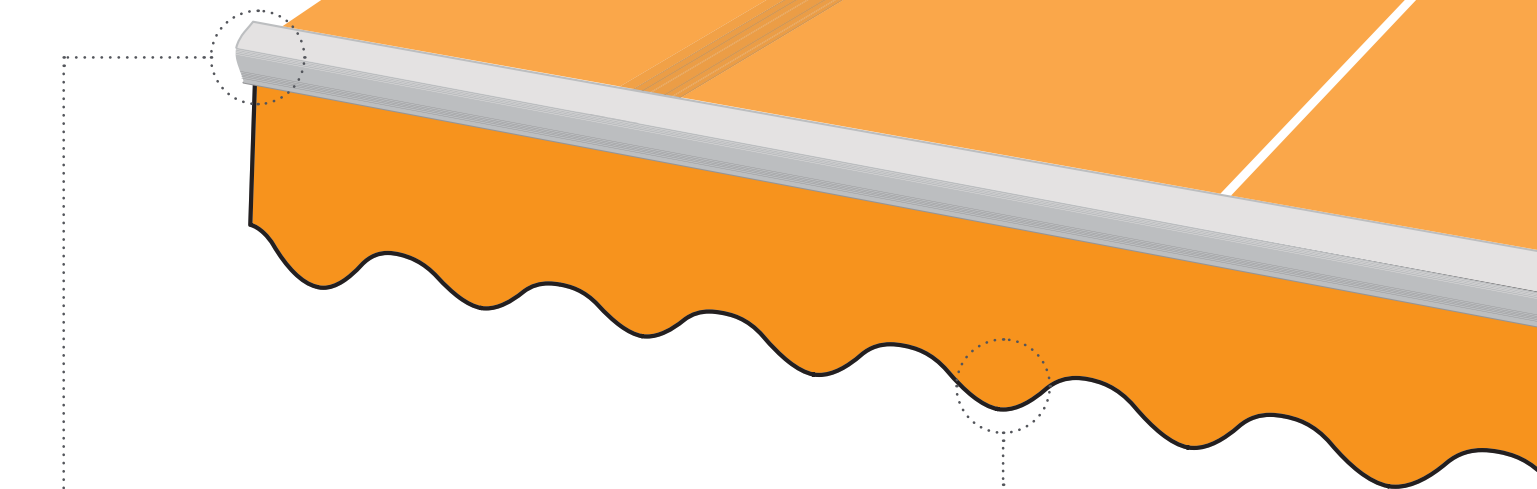
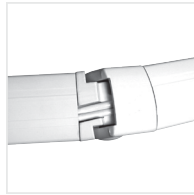


**Roller support** comes standard with all models 18' or wider to ensure superior strength and durability.

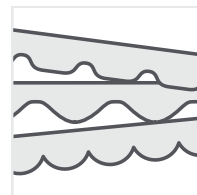


Our **roller tube** is made of corrosion resistant aluminum. It installs more easily and provides less stress on the bolts and frame - so it lasts longer too!

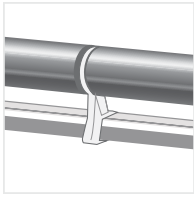
**Arms** are made of extruded aluminum and use twin cables for added strength. These cables are made of extruded aluminum and covered with PVC, which allows heavier tension and longer outdoor life even under the most extreme outdoor conditions.



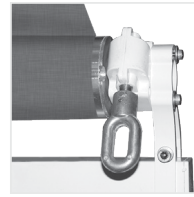
The newly designed **front profile** makes for a straighter awning, and gives a crisp, distinctive style to the overall appearance.



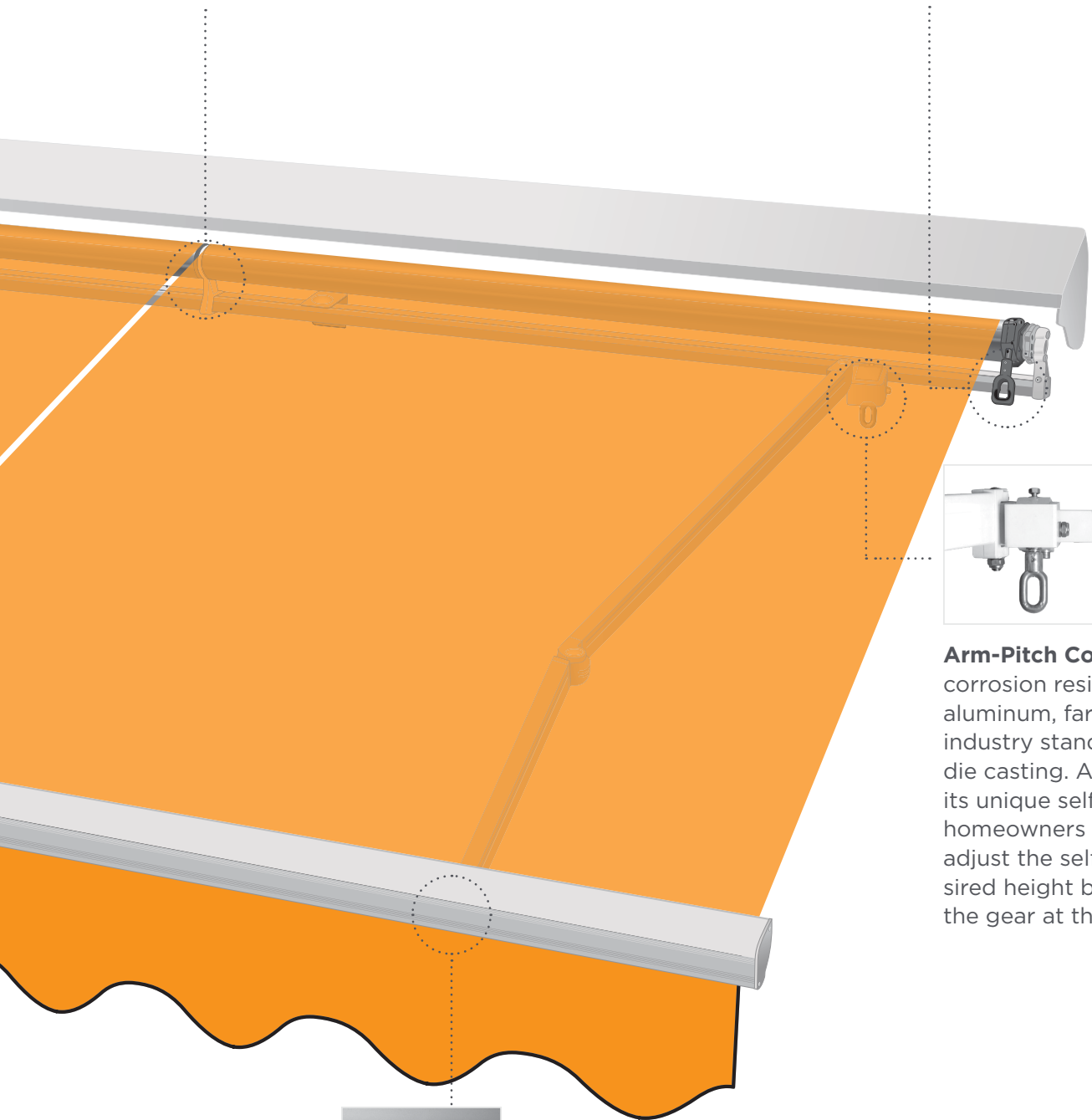
Many **valence styles** are available, with an extensive variety of fabrics, both solid colors and stripes.



Awnings that are 24' or wider can be split in two with a **center bracket** providing extra support, and an approximate 1" gap in between.



The super-efficient **roller gear** is truly top-of-the-line. That means less strain in both motorized and manually operated models - and many years of trouble-free use!



**Arm-Pitch Control** is made of corrosion resistant extruded aluminum, far superior to the industry standard of aluminum die casting. Additionally, with its unique self-pitch feature, homeowners will be able to adjust the self pitch to their desired height by simply cranking the gear at the Pitch Control.



A **level** is added to each arm where it is attached to the front profile. This unique addition makes installing your awning easy and accurate within minutes.

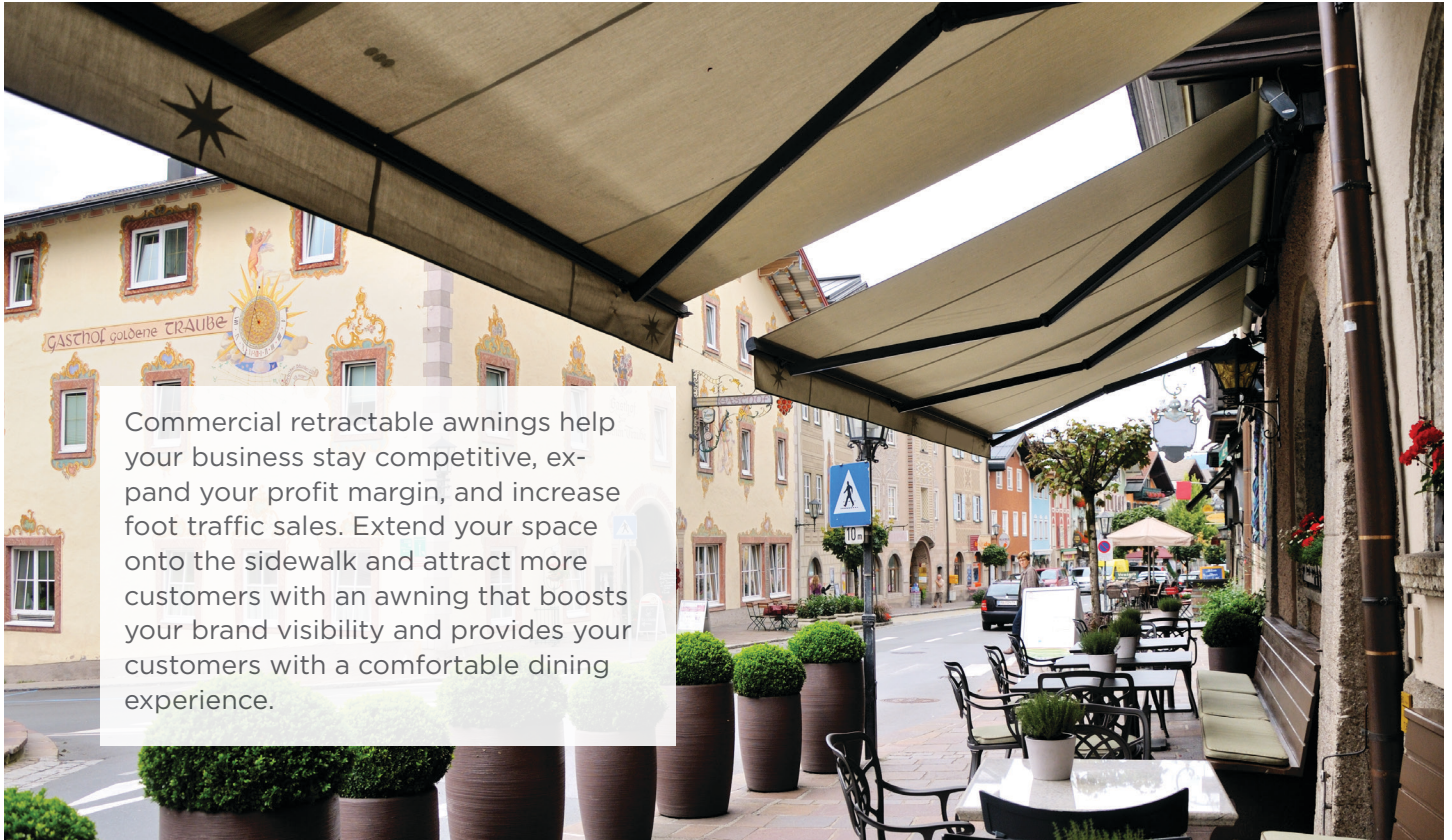
# SUN 3000 3000C 3000X



Breathe in the fresh outdoor air in the comfort and privacy of your home. Start your day under your awning, sipping coffee and allowing your body to re-energize. Let nature lift your mood and spirit as your awning brings you protection from the sun's rays. Ready to start your day? Patio-turned-office is now your private space to catch up on emails and get work done, without having to leave your oasis. Work-life balance takes on a whole new meaning, with an awning that creates the peace and tranquility you crave.

# SUN 5000

MAX PROJECTION 16.6 FEET



Commercial retractable awnings help your business stay competitive, expand your profit margin, and increase foot traffic sales. Extend your space onto the sidewalk and attract more customers with an awning that boosts your brand visibility and provides your customers with a comfortable dining experience.

# SUN 8000

DROP-ARM WINDOW SOLUTION



Protect your indoor floors and furniture and give your air conditioner a break. The U.S. Department of Energy estimates that window awnings can reduce solar heat absorption up to 65% on south-facing windows and 77% on west-facing windows. That means a cooler house in the summer and a leaner energy bill.

# MOUNTING OPTIONS



**Wall Mount**



**Soffit Mount**



**Roof Mount**

Available in painted or unpainted stainless steel



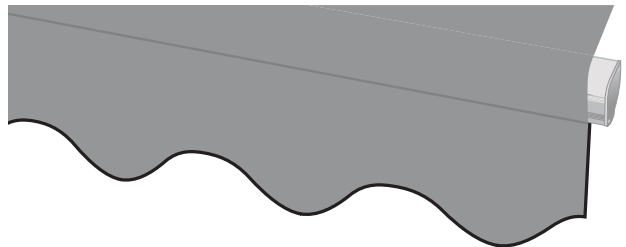
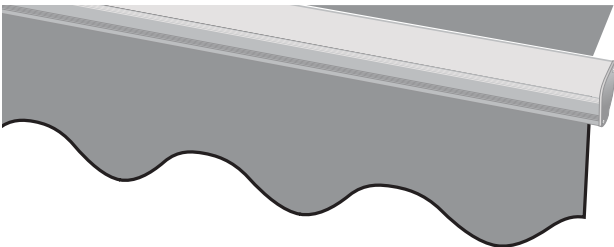


## Sunbrella Fabric

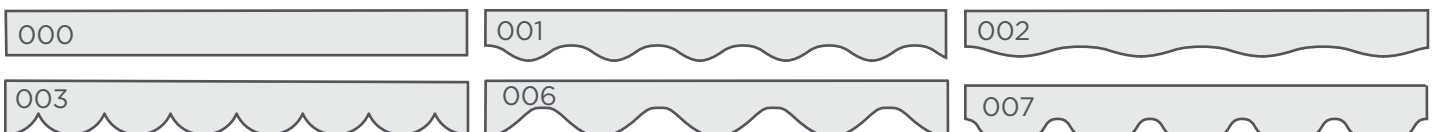
Choose from over 125 distinct colors and patterns in solids and stripes.

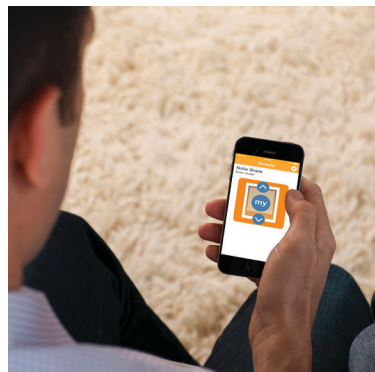
## Profile Options

Choose from a visible or concealed profile.



## Valance Styles





### Somfy myLink

With Somfy myLink™, you are in control. Operate your motorized awning from anywhere with one tap to extend and retract your awning as needed. You can even automate your awning on a schedule to effortlessly enjoy its many benefits.



Free iOS and Android app



### Smart Control

The Somfy Smart Home system lets you easily control your awning with voice commands to Alexa or Google Home.

# AUTOMATION

## CONVENIENCE ANYWHERE

SOMFY motors make life easier. Use a remote control for instant open and close, or upgrade to wind and sun sensors for a fully automated experience.

### Rain & Sun

With the upgraded rain and sun sensors, your awning will react automatically to open and close in changing weather. These small things will go a long way to enhance your lifestyle the way you deserve.

### Wind

Never worry again with a sensor designed to protect your awning in windy conditions. Your awning will automatically retract when wind is detected, even while you are away.



**Weather Sensors**

### Remote control

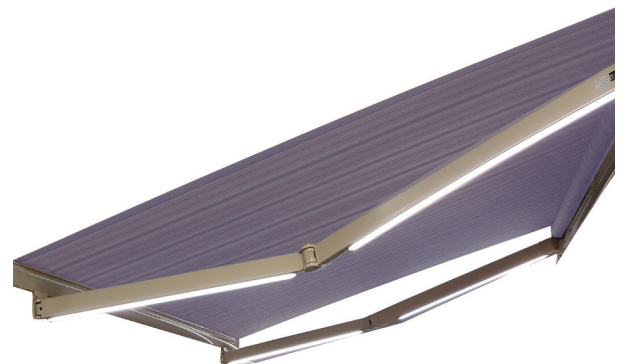
Extend your awning with the touch of a button to keep your home cool and protected from the sun.



**Switches & Remote Control**

### LED Lighting

Enhance your outdoor experience with built in LED light strips for a nighttime mood lighting, available in warm and cool.



# sunsation™

RETRACTABLE AWNINGS

For more information please contact  
your authorized Sunsation dealer



Sunsation awnings deliver Quality, Comfort, and Class.  
Become a Sunsation™ owner today. You'll love the difference.

[sunsationawning.com](http://sunsationawning.com)