

SlimLINER

Low-profile outdoor
and indoor linear lighting



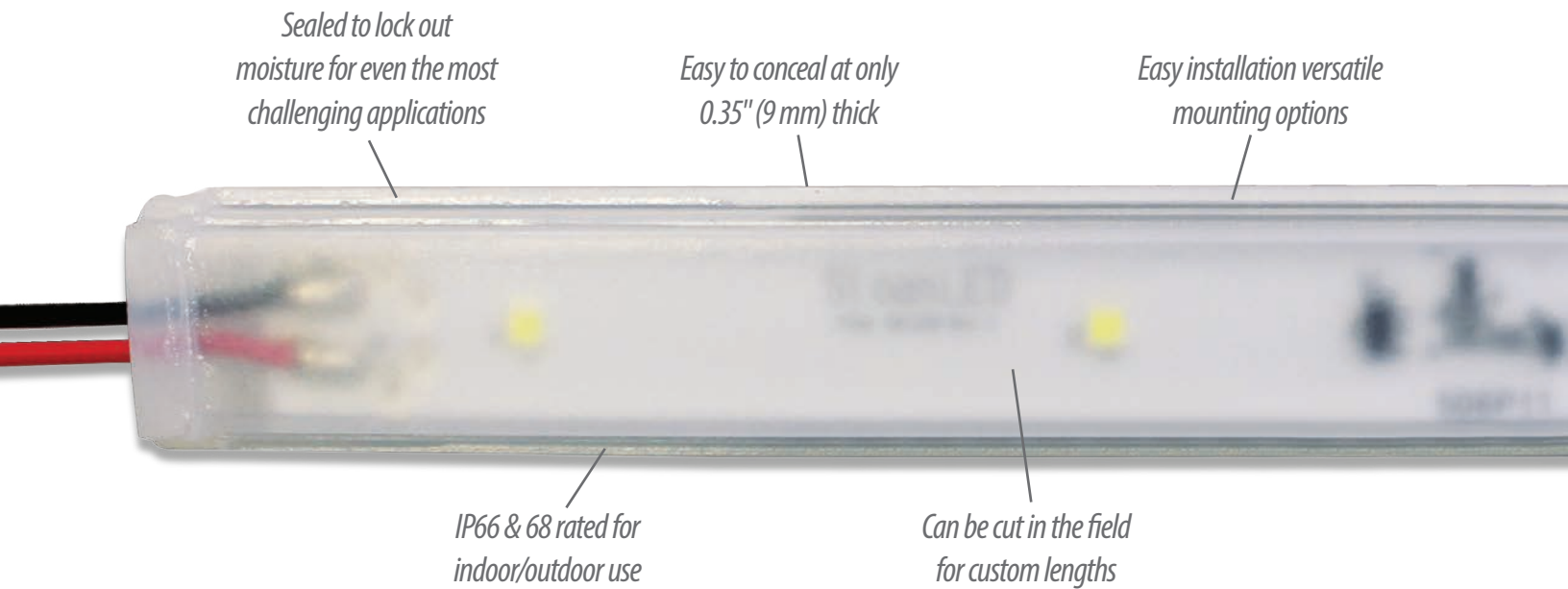
We Brighten
Your Brands.



SloanLED®
Leaders in LED Technology

Designed for a slim fit.

SlimLINER is the low-profile, outdoor and indoor lighting solution that offers natural white illumination for awnings, vinyl canopies, and accents. The sleek, slender design is ideal for narrow applications traditionally reserved for T4 and T5 fluorescent fixtures.



- Fast, easy installation with versatile mounting options
- Can be cut in the field to custom lengths
- Slim, lightweight, low-profile fixture
- 12" (305 mm) bend radius
- Illuminates awnings evenly
- Constant Current Technology (CCT)



A beacon of change.

Fluorescent alternative LED lighting from SloanLED is a brilliant, energy efficient, solution for illuminating cove, awning, and wall wash applications or highlighting non-illuminated signs.

Product	Description
HighLINER 2	Natural white illumination for soffits, awnings, and wall washes.
SlimLINER	Natural white illumination for awnings, vinyl canopies, and accents in narrow applications.

For more information on our Fluorescent Alternative collection of products, visit SloanLED.com.

We're on a power trip.

Constant Current Technology (CCT) is at the heart of SloanLED's product offering, and forms the backbone of SloanLED channel letter products. We introduced CCT to the industry to maintain consistent current levels, eliminating the line loss and voltage drop issues common in many LED lighting systems. CCT provides uniform light output throughout the entire installation, while also preventing damage from overdriving of the LEDs.

Low profile for high visibility.

SlimLINER — designed for easy installation, high energy savings, and low maintenance — keeps a low profile to put your brand in the spotlight where it belongs.



There's no substitute for quality.

Other LED manufacturers use cheaper components and maximize the potential brightness of their products at the expense of longevity; overdriving the LEDs for instant gratification while sacrificing sustainability and endurance. SloanLED uses the highest caliber components in order to offer you a superior product with the longest lifespan.

SlimLINER

Specifications

Part number	5000 K..... 701956-5WL461
	3500 K..... 701956-3WL461
Dimensions L × W × H	46 in × 0.89 in × 0.35 in (1168 mm × 23 mm × 9 mm)
Lumens per fixture	5000 K..... 970
	3500 K..... 825
In-field bends	Radial bend..... 12 in (305 mm)
Color temperatures (nominal) ..	5000 K, 3500 K
Color rendering index (CRI)	5000 K..... 70 (nominal)
	3500 K..... 82 (nominal)
Estimated product lifetime	50,000 hours (L ₇₀)
Operating temperature	-40° C to 70° C
Protection class	IP66 & IP68 ¹
Special feature	Cuttable every 6 in (150 mm) for two usable sides
Power	2.25 W per foot (7.4 W per meter), 9.0 W per fixture
Efficacy	5000 K..... 108 lm/W
	3500 K..... 92 lm/W
Fastening	Peel-n-stick or mounting clips (401203), 4 included with each unit
Power capacity	6 units per SloanLED 60 W 12 VDC power supply



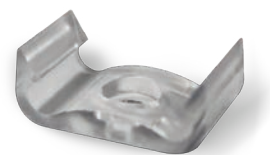
¹ IP66 & IP68 ratings provide protection for extreme outdoor and wet applications or harsh weather exposure. Do not mount in a submerged application.

Power Supply Capacity

Item description (Part number)	Power output	SlimLINER Fixtures
Self-Contained 20 W ¹ [701680]	20 W	2
Compact 12/25 W [410174]	25 W	2
60C1 60 W [701507-60C1] 60W1 60 W [701507-60W1] 60W2 60 W [701507-60W2] MODW(E) 60 W [701507-MODW(E)] MOD277 60 W [701507-MOD277]	60 W	6
120D1 120 W [701507-120D1]	120 W	6 × 2
Power used per foot/meter in Watts		9.0 W/7.7 W per fixture

¹ U.S. and Canada only.

Accessories



Mounting Clip

401203

Four (4) included with each unit.

Sold in bags of 25.

SloanLED Headquarters
805.676.3200 • info@SloanLED.com

SloanLED Europe b.v.
+31 88 12 44 900 • Europe@SloanLED.com

SloanLED.com

