



# MARQUEE AWNING FIXTURE

FOR BETTER, BRIGHTER, AWNINGS



IP66

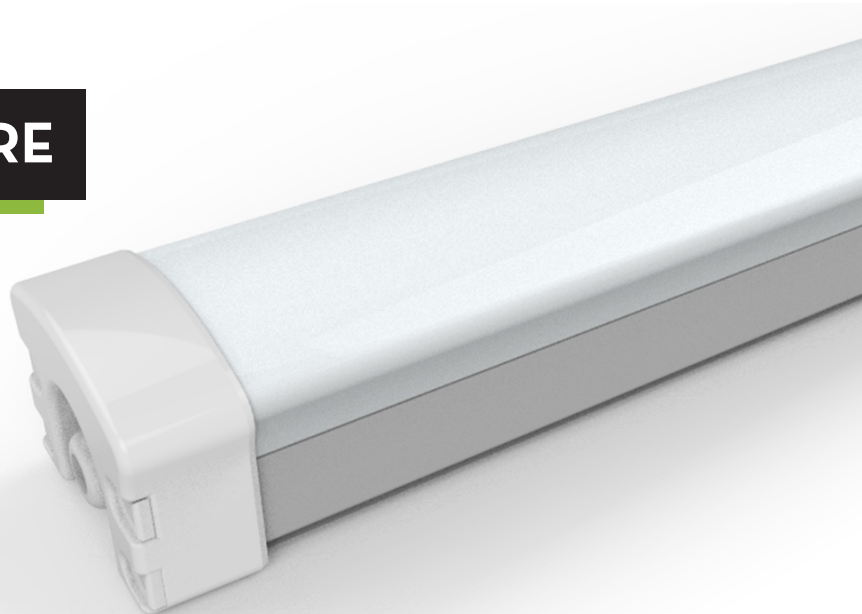


**5** YEAR  
WARRANTY

 **GreenleafLED®**

[greenleafled.com](http://greenleafled.com)

# MARQUEE AWNING FIXTURE



**PLUG & PLAY**

No Assembly required –  
connect directly to  
power source.



**SUPER BRIGHT**

50% brighter than traditional  
fluorescent lamp fixtures,  
for brighter awnings.



**INSTANT-ON**

No warm-up time, flickering,  
or buzzing - consistent and  
even light all the time.



**DAISY-CHAIN  
OR PARALLEL**

Connections on both ends - can  
be wired in series or parallel.

\*see specifications for maximum run length



**WEATHERPROOF**

Rated IP66 for protection  
against dust, water, and vapor  
- can handle the elements.

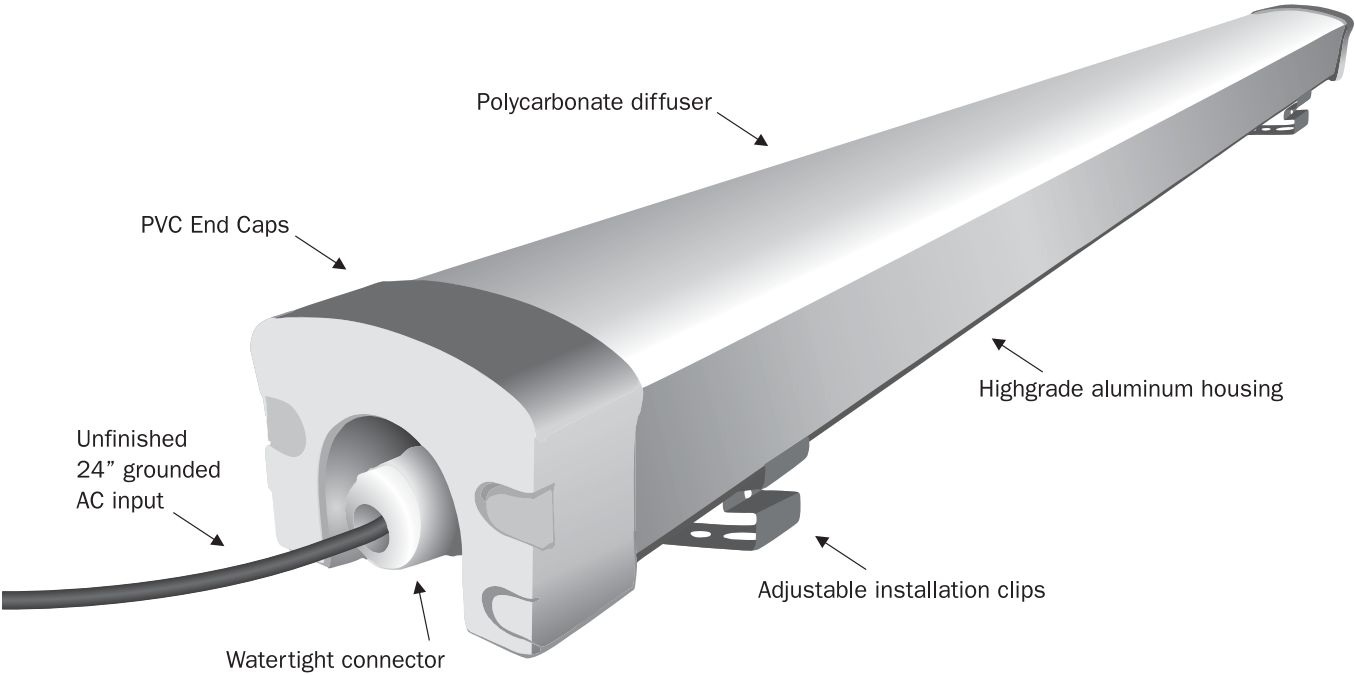


**ENERGY  
EFFICIENT**

130 lm/W efficiency – up to  
60% less energy usage than  
traditional fluorescent.

# MARQUEE AWNING FIXTURE

## SPECIFICATIONS



PART NUMBER	TEMPERATURE	POWER CONSUMPTION	BRIGHTNESS	POWER INPUT	BEAM ANGLE	WEIGHT	DIMENSIONS
GLAF4	6000K	50 WATT	6,500lm	100-277V AC	120°	5.5 lbs	47.25" x 3.5" x 2.7"
GLAF8	6000K	100 WATT	13,000lm	100-277V AC	120°	11 lbs	94.5" x 3.5" x 2.7"

MAX UNITS IN SERIES	100V	200V	277V
GLMAF4 (50W)	12	26	33
GLMAF8 (100W)	6	13	16



GreenleafLED stands behind its products. Our products are thoroughly tested to the highest standards, and we maintain strict quality control procedures.

#### **Limited Warranty Terms and Conditions**

GreenleafLED Marquee Awning Fixtures are warranted to be free from defects in workmanship and material for five (5) years from the date of invoice, subject to the published specifications for this product.

This limited warranty is provided to the original purchaser of the product from an authorized GreenleafLED distributor and is valid provided the product is installed and used according to the manufacturer's specifications, the user manual, and local and national building and electrical codes.

All LED systems have some light degradation over time. This limited warranty applies to a depreciation of luminosity greater than 30% over 5 years from invoice date. Lumen depreciation is compared to the published lumen output of the product on the date of manufacture per IES LM80-08. Dirt, damage, or other blockage is not factored into lumen depreciation.

Any use outside of intended use or specifications, including dimming, flashing, or other lighting effects, or use and/or storage in extreme environmental conditions, render this limited warranty void.

GreenleafLED will, at its discretion, replace or repair the product. Warranty is provided on a pro-rata basis from the date of purchase on the original invoice.

GreenleafLED reserves the right to require a physical examination and verification of the failure. This limited warranty is exclusive to the GreenleafLED product, and does not include shipping or labor costs.

#### **Warranty claims**

To submit a warranty claim, contact your authorized distributor.



Visit us at

**[greenleafled.com](http://greenleafled.com)**

for more information and for our complete  
line of innovative LED products.